

Citizen Science Month 2024 ~ Adult Game Card

Name: _____ Phone Number (to contact prize winner): _____

SUNDAY

MONDAY

TUESDAY

WEDNESDAY

THURSDAY

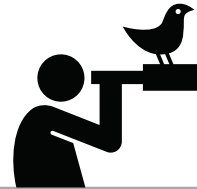
FRIDAY

SATURDAY

1
Help us hit 1 million acts of science this month! Begin at scistarter.org/citizenscience-month-participate



2
If you haven't already, stop by NVPL this week to receive your Solar Eclipse Sunglasses and make a protective lens case.



3
Birding for Beginners with Bitterroot Audubon
NVPL ~ 6pm

4
National Walk to Work Day
Walk instead of drive at least once today and notice something new on the way.

5
Help track monarchs & milkweed across the West
monarchmilkweedmapper.org



6
North American Total Solar Eclipse
Use solar glasses to view the eclipse at 11:33am
Join the Solar Eclipse Safari scistarter.org/solar-eclipse-safari

7
Go for a walk on a public-access trail anytime this week. Bring a bag and use gloves to pick up any trash you may see along the way.

8
Rockhounding with Neil Meier (Watch Party)
NVPL ~ 6:30pm

9
Review the list of *MT Animal Species of Concern (Ravalli County)* available at NVPL. Pick 1 animal and learn how to recognize it.

10
Join a zooniverse.org project that interests you.
zooniverse.org/projects

11
Bumble Bee Conservation Webinar
10am MST
tinyurl.com/bumblebee-webinar

12
Complete the Foundations of Citizen Science training anytime this month at scistarter.org/training-foundations

13
Join a project that interests you at
mtaudubon.org/birds-science/citizen-science-opportunities/

14
Use a field guide or app to identify an unfamiliar plant, bird, insect, or animal.

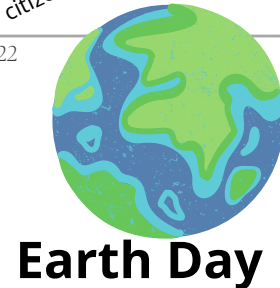


15
Visit SciStarter.org/finder & join a project that interests you. Try filtering by Location = Montana

16
Checkout at least 1 of the following from NVPL Library of Things this month:
• Starry Skies Kit
• Birding the Bitterroot Kit
• Pollinator Observation Kit
• Telescope

17
 Document nature at a National Park anytime this month
scistarter.org/list/NatParks

18
Practice birdwatching at Lee Metcalf Nat'l Wildlife Refuge, Stevensville, anytime this week



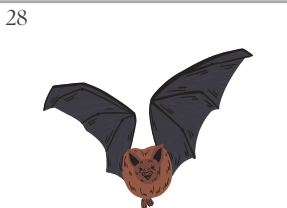
19
Submit observations to the Montana Natural Heritage Observations via the iNaturalist app or mntnhp.org/observations.asp

20
Calculate the environmental benefit of trees in your yard at mytree.itreetools.org



21
Contribute to the MT Register of Big Trees Program
Help transcribe letters from the 16th & 17th centuries.
zooniverse.org/projects/printmigrationnetwork/print

22
Join a NASA project that interests you.
scistarter.org/nasa-live



23
Review the list of *MT Plant Species of Concern (Ravalli County)* available at NVPL. Pick 1 plant and learn how to recognize it.

24
Did you and your fellow citizen scientists around the world complete 1 million acts of science? Find out at scistarter.org/citizenscience-month

How to Play

1. Mark the box for each activity you complete. You will be entered in the prize drawing for each box you check, so the more you play, the better your odds of winning.
2. Return your gamecard to NVPL by 6pm on Friday, May 3rd. Don't forget to include your name and phone number.
3. Drawing will be held May 4 and the winner will be notified by phone.

North Valley Public Library does not endorse the organizations, websites, or institutions included on this gamecard. By participating, you assume all risks and responsibilities inherent to the activities related to or resulting from this gamecard, and release North Valley Public Library, its staff, and agents, of any liability and waive the right to sue if any loss or injury is suffered from participation.