

Pumpkin Cottage Instructions

The Pumpkin

- 36 or 38 gauge needle for bulk work
- 40 gauge needle for detail and surface work
- 1 yarn ball to use as base object
- Uncarded wool roving to add bulk
- Wool roving in 2-3 colors to use for pumpkin
- Wool roving in colors of your choice for a stem and leaf



Form the shape of a ball about 2.5" diameter. To conserve roving, you can use a ball of yarn as your base, a foam object, batting, or uncarded wool roving tied in a thick knot.

Wrap uncarded wool roving around the base shape and use a 36 or 38 gauge needle to gently tack the ends in. Do not wrap too tightly as the loose bulk of the roving is what will form your pumpkin segments. Your object should be about the size of a softball.



Prepare your colored wool roving by gently pulling the roving apart to separate the fibers.

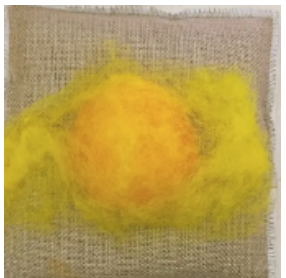
Choose 1 pumpkin color

- Felt one end of the roving to the bottom of your pumpkin.
- Pull the roving over the pumpkin until the opposite end reaches the bottom. Felt end in.

You will see the uncarded wool roving through the colored roving; this helps give the pumpkin a marbled appearance.

Take a different color of roving and repeat the step above.

Felt your pumpkin just enough to hold its shape. It should feel spongy and malleable.



Repeat the process of adding a layer of color until you are satisfied. Be sure to pull the roving thin enough to reveal the colors below.

Form the pumpkin segments by laying a very thin piece of roving at the top of your pumpkin. Felt to secure.

- Separate the fibers into 6 strands. Take 1 strand and pull it tightly down to the bottom of your pumpkin. Felt to secure the strand. Pulling tightly forms segments and gives your object its pumpkin appearance.
- Repeat until all strands are secured and your pumpkin shape is complete.

Set your pumpkin aside as you form and **felt a stem and a leaf.**

With a 40 gauge needle:

- Attach the stem and leaf to your pumpkin.
- Felt your entire pumpkin until you achieve a smooth surface.
- Do not over-felt your pumpkin as it will be further felt with the addition of cottage details.





Pumpkin Cottage Instructions, cont.



Cottage Details

- 40 gauge needle for detail and surface work
- Wool roving in colors of your choice for the following:
 - Door
 - Window
 - Window frame
- Wood slice as base
- Moss to conceal edge of base and pumpkin
- Hot glue for fabric or superglue

Optional

- Wool roving for additional details you choose. Example:
 - Curtains in window
 - Step in front of door
 - Door frame and knob
- Baubles and small decorative items

Outline the edges of your door. Take a thin strand of wool roving and felt one end to secure. Shape the strand to form the outline of a door, tacking in with your needle as you go. Felt to secure the final end.

Fill in the door by felting directly on the pumpkin inside the outline you just made.

Make a window by repeating the process above.

To avoid over-felting your pumpkin and breaking needles: As you add these details and more, felt just enough to maintain shape and to secure to the pumpkin. Once all your details are added, go over the entire object to complete the felting process.

Attach to base & finish

- Use hot glue for fabric or superglue to attach the bottom of your pumpkin cottage to your wood slice.
- Tuck in and glue moss around your pumpkin's edges.
- Add any final objects and enjoy!

