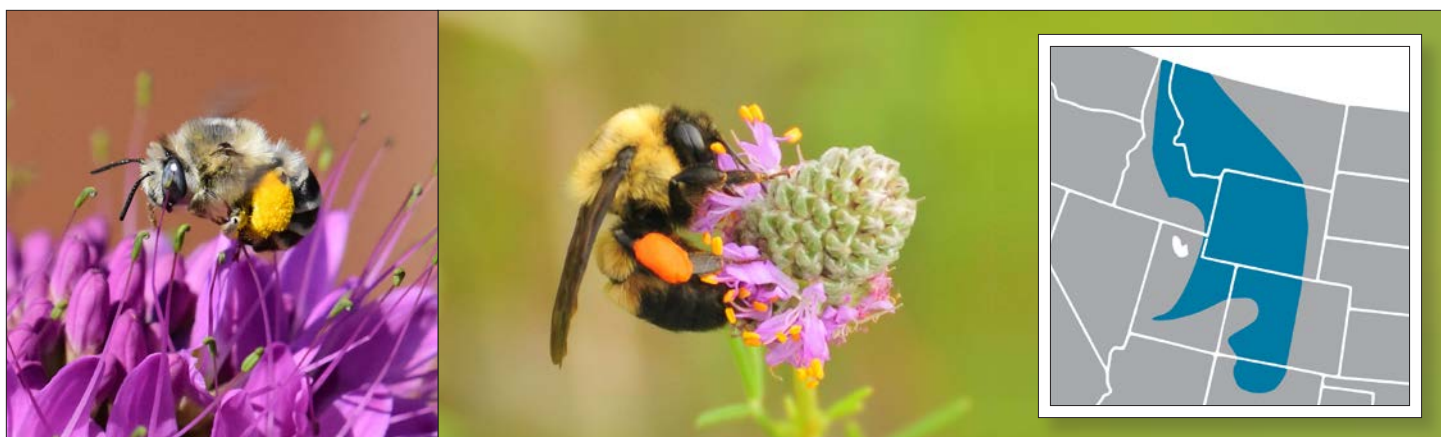


# NATIVE PLANTS FOR POLLINATORS & BENEFICIAL INSECTS: Rocky Mountains



LEFT—Digger bee collecting on *Peritoma serrulata*. RIGHT—Brown-belted bumble bee (*Bombus griseocollis*) collecting pollen from *Dalea purpurea*.

## Plant Selection

These plants are attractive to a diversity of pollinators, providing pollen and nectar to bees, butterflies, flies, beetles, wasps, and moths. Some plants provide additional resources as caterpillar host plants or nesting sites and nesting materials for above-ground nesting bees. Many support specialist bees that require pollen from specific plants to survive and supplement beneficial insects that can help control pests of ornamental and crop plants. These plants are native to this region—determine if a species is native in your area at [plants.usda.gov](http://plants.usda.gov)—and can be used to create or enhance pollinator habitat across rural and urban landscapes.

When purchasing plants, let your local garden center or nursery know you want plant material free of pesticides that may harm pollinators.

## Resources

- ⇒ Pollinator Conservation Resource Center: [xerces.org/pollinator-resource-center](http://xerces.org/pollinator-resource-center)
- ⇒ Bring Back The Pollinators: [BringBackthePollinators.org](http://BringBackthePollinators.org)
- ⇒ Reducing Pesticide Use & Impacts: [xerces.org/pesticides](http://xerces.org/pesticides)

SCIENTIFIC NAME	COMMON NAME	BLOOM	LIFE	FORM	SUN	SOIL	ADDITIONAL DETAILS ⓘ
<i>Achnatherum hymenoides</i>	Indian ricegrass	MAY–JUN	P			D	
<i>Agastache urticifolia</i>	Nettleleaf giant hyssop	JUN–AUG	P			D–M	
<i>Amelanchier alnifolia</i>	Saskatoon serviceberry	JUN–JUL	P			D	
<i>Aquilegia coerulea</i>	Colorado blue columbine	JUN–JUL	P			M	
<b><i>Asclepias speciosa</i>★</b>	Showy milkweed	MAY–SEP	P			D–M	
<i>Asclepias viridiflora</i>	Green comet milkweed	JUN–SEP	P			D	
<i>Berberis repens</i>	Creeping barberry	MAY–JUL	P			D	
<i>Bouteloua gracilis</i>	Blue grama	MAY–JUL	P			D	
<i>Campanula rotundifolia</i>	Bluebell bellflower	JUN–SEP	P			D	
<b><i>Chamerion a. ssp. angustifolium</i>★</b>	Fireweed	JUL–SEP	P			M	
<i>Cirsium undulatum</i>	Wavyleaf thistle	JUN–AUG	B / P			D–M	
<i>Dalea candida</i>	White prairie clover	MAY–SEP	P			D	

<b>KEY</b>	<b>LIFE:</b> Annual	<b>SOIL:</b> Dry	★ <b>Staff favorite</b>	<b>FORM:</b> Forb	Sedge	Vine	<b>SUN:</b> Full sun	<b>ADD'L:</b> Larval host (butterfly, moth)	Bumble bee plant	Nest materials
	Biennial	Moist		Cactus	Shrub	Partial sun	<b>DETAILS:</b> Supports specialist bee			
	Perennial	Wet		Grass	Tree	Full shade	Attracts beneficial insects	Nest site	Deer resistant	

## Native Plants for Pollinators & Beneficial Insects: Rocky Mountains *continued*

SCIENTIFIC NAME	COMMON NAME	BLOOM	LIFE	FORM	SUN	SOIL	ADDITIONAL DETAILS ①
<i>Dalea purpurea</i>	Purple prairie clover	JUL–AUG	P			D	
<i>Deschampsia cespitosa</i>	Tufted hairgrass	JUN–AUG	P			M–W	
<b><i>Ericameria nauseosa</i></b> ★	Rubber rabbitbrush	AUG–OCT	P			D	
<i>Erigeron speciosus</i>	Aspen fleabane	JUL–SEP	P			M	
<i>Eriogonum umbellatum</i>	Sulphur-flower buckwheat	JUN–JUL	P			D	
<i>Gaillardia aristata</i>	Blanketflower	APR–MAY	P			M	
<i>Geranium viscosissimum</i>	Sticky purple geranium	MAY–SEP	A / P			D	
<b><i>Grindelia squarrosa</i></b> ★	Curlycup gumweed	JUL–SEP	A / P			D	
<i>Gutierrezia sarothrae</i>	Broom snakeweed	JUN–JUL	P			D	
<i>Helianthus petiolaris</i>	Prairie sunflower	JUL–SEP	A			D	
<b><i>Heterotheca villosa</i></b> ★	Hairy false goldenaster	JUN–AUG	P			M	
<i>Ipomopsis aggregata</i>	Scarlet gilia	JUN–SEP	B/P			D	
<i>Liatriis punctata</i>	Dotted blazing star	JUL–SEP	P			D	
<i>Linum lewisii</i>	Lewis flax	MAY–SEP	P			D	
<i>Lupinus argenteus</i>	Silvery lupine	JUL–SEP	P			D	
<b><i>Machaeranthera tanacetifolia</i></b> ★	Tanseyleaf tansyaster	AUG–OCT	A			D–M	
<b><i>Mentzelia decapetala</i></b> ★	Tenpetal blazingstar	JUN–AUG	B / P			D	
<i>Monarda fistulosa</i>	Wild bergamot	MAY–SEP	P			D–M	
<i>Nassella viridula</i>	Green needlegrass	MAY–JUN	P			D	
<b><i>Oenothera cespitosa</i></b> ★	Tufted evening primrose	MAY–JUN	P			D	
<i>Penstemon angustifolius</i>	Broadbeard beardtongue	APR–MAY	P			D	
<i>Peritoma serrulata</i>	Rocky Mountain beeplant	JUL–SEP	A			D	
<b><i>Phacelia hastata</i></b> ★	Silverleaf phacelia	APR–MAY	P			D	
<i>Prunus virginiana</i>	Chokecherry	APR–MAY	P			D–M	
<i>Purshia tridentata</i>	Antelope bitterbrush	MAR–APR	P			D	
<i>Ratibida columnifera</i>	Prairie coneflower	MAY–OCT	P			D	
<i>Ribes cereum</i>	Wax currant	APR–JUN	P			D–M	
<b><i>Rosa woodsii</i></b> ★	Woods' rose	MAY–JUL	P			M	
<i>Rubus parviflorus</i>	Thimbleberry	MAY–AUG	P			D–M	
<i>Salix bebbiana</i>	Bebb willow	APR–MAY	P			M–W	
<i>Schizachyrium scoparium</i>	Little bluestem	AUG–SEP	P			D–M	
<i>Solidago missouriensis</i>	Missouri goldenrod	JUL–SEP	P			D	
<i>Solidago rigida</i>	Stiff goldenrod	AUG–SEP	P			D	
<i>Sphaeralcea coccinea</i>	Scarlet globemallow	APR–SEP	P			D–M	
<i>Symphoricarpos occidentalis</i>	Western snowberry	JUN–AUG	P			M	
<i>Symphyotrichum laeve</i>	Smooth blue aster	AUG–SEP	P			D	
<i>Thermopsis montana</i>	Mountain goldenbanner	MAY–JUL	P			D–W	
<i>Vaccinium scoparium</i>	Grouse whortleberry	JUN–JUL	P			D–M	

<b>KEY</b>	<b>LIFE:</b> Annual	<b>SOIL:</b> Dry	★ <b>Staff favorite</b>	<b>FORM:</b> Forb	Sedge	Vine	<b>SUN:</b> Full sun	<b>ADD'L DETAILS:</b> Larval host (butterfly, moth)	Supports specialist bee	Bumblebee plant	Nest site	Nest thatch	Deer resistant
	Biennial	Moist		Cactus	Shrub	Partial sun	Full shade		Attracts beneficial insects				
	Perennial	Wet		Grass	Tree								

## Acknowledgments

This list was developed with funding from the Church and Dwight Philanthropic Foundation, CS Fund, Disney Conservation Fund, General Mills, Karyn & David Ries Charitable Fund, and USDA Natural Resources Conservation Service. **PHOTOS:** Tom Koerner / USFWS ([flickr.com/usfwsmtnprairie](https://www.flickr.com/photos/usfwsmtnprairie/)). For more information on installing pollinator habitat, see the list of Resources on front page.

We make the commitment to you that we will work every day to protect pollinators and their habitat. Will you support our work?

Make a tax-deductible donation to the Xerces Society today! Visit [xerces.org/donate](https://xerces.org/donate) to learn more.